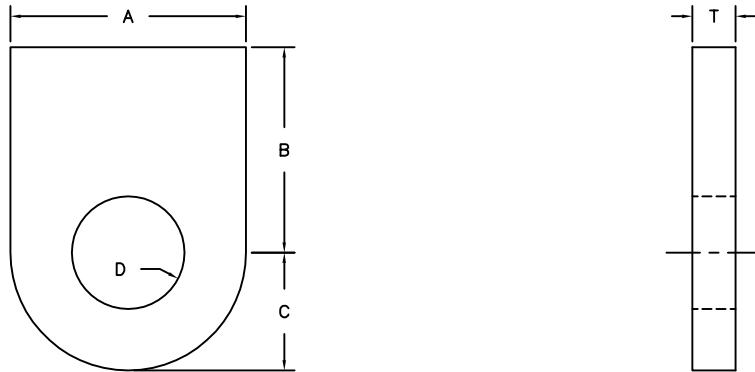




Specialty Piping Products

WELDING LUGS



ROD SIZE	A	B	C	D	T
1/2"	2 3/4	2	1 3/8	11/16	1/4
5/8"	2 3/4	2	1 3/8	13/16	1/4
3/4"	2 3/4	2	1 3/8	15/16	3/8
7/8"	2 3/4	2 1/2	1 3/8	1 1/8	3/8
1"	3 1/4	2 1/2	1 5/8	1 1/4	1/2
1 1/8"	3 1/4	3 1/2	1 5/8	1 3/8	1/2
1 1/4"	4 1/4	3 1/2	2 1/8	1 1/2	5/8
1 1/2"	5 1/4	3 1/2	2 5/8	1 3/4	3/4
1 3/4"	5 1/4	3 1/2	2 5/8	2	3/4
2"	6 1/4	4 1/2	3 1/8	2 3/8	3/4
2 1/4"	6 1/4	5	3 1/8	2 5/8	3/4
2 1/2"	8 1/4	5	4 1/8	2 7/8	1
2 3/4"	8 1/4	5	4 1/8	3 1/8	1
3"	8 1/4	5 1/2	4 1/8	3 3/8	1

OPTIONS:

-GALVANIZED, PAINTED OR PLAIN FINISH

NOTES:

1. AVAILABLE IN CARBON STEEL, 304SS, & 316SS.
2. ALL DIMENSIONS ARE IN INCHES.
3. SPECIFY ANY DIMENSIONS IF DIFFERENT FROM CHART ABOVE.